

RISE TO HEALTH COALITION

Surveying Health Care
Professionals on Health Equity

Surveying Health Care Professionals on Health Equity

To better understand health care professionals' views on health equity, the Rise to Health Coalition commissioned a survey of 1,400 professionals employed at health care-related companies. Specifically, we sought to understand:

- How significant or insignificant health care professionals think the issue of health equity is in our health care system today;
- What health care professionals think are the most effective ways to achieve health equity in our health care system;
- What health care professionals think is the greatest barrier to achieving health equity in our society;
- How confident health care professionals are in the ability of the current health care system to address health equity effectively;
- To what extent health care professionals think their company or organization has done a successful job of effectively addressing health equity;
- To what extent health care professionals think their company or organization is capable of effectively addressing health equity;
- Whether health care professionals think health equity has improved or declined in the United States over the past five years; and
- How long health care professionals think it will take to achieve noticeable improvements in health equity across the country.

Summary of Results

The responses to this survey, presented in detail below, were illuminating. While more than 82 percent of respondents said that health equity is a very or somewhat significant issue in the US health care system today, less than half held an optimistic view of the ability of the current health system to address equity effectively. We see this as a prime opportunity for initiatives like the [Rise to Health Coalition](#) to change the status quo by bringing parties together to advance shared solutions and collective action to strengthen and transform health care.

The survey responses also highlighted interesting differences in respondents' views of their own organizations' health equity progress and their opinions on progress in health care as a whole. Just under a quarter of respondents believe health equity has improved over the past five years, while more than four in ten think it has declined. In contrast, 63 percent of respondents say that their organization has done a successful job of effectively addressing health equity.

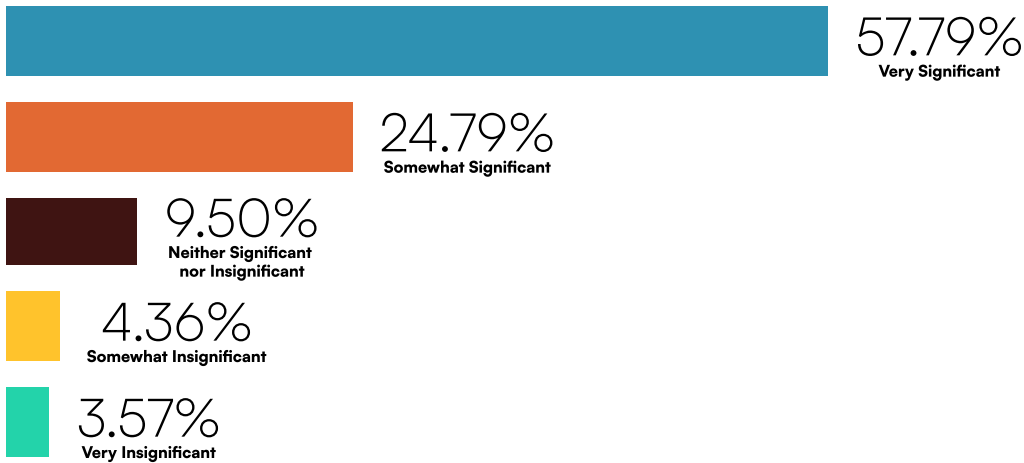
Methodology

OnePoll surveyed 1,400 health care professionals between August 4 and August 9, 2023. The survey included four demographic questions (age, gender, geography, race) and four job-related questions (employment status, industry, number of employees at company or organization, current role). It then

asked eight questions related to health equity. All respondents were age 21+ and work at health care-related companies. The majority of respondents (86 percent) were employed full-time with 12.43 percent employed part-time and the remaining 1.57 percent self-employed.

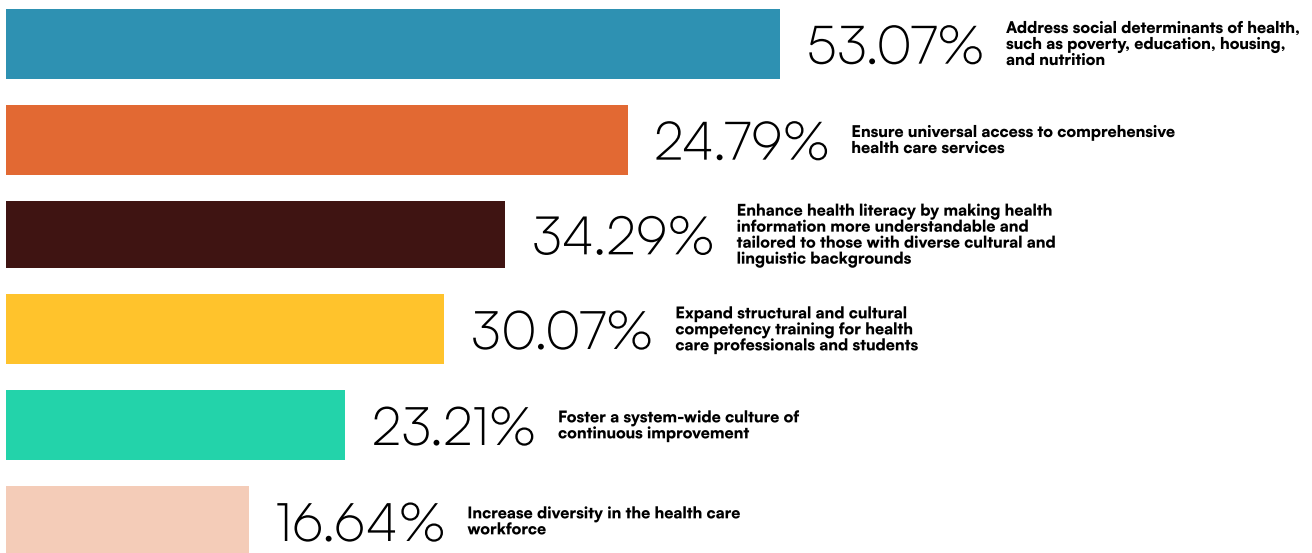
Results

Health equity is the state in which everyone has a fair and just opportunity to attain their highest level of health. How significant or insignificant do you think the issue of health equity is in our health care system today?

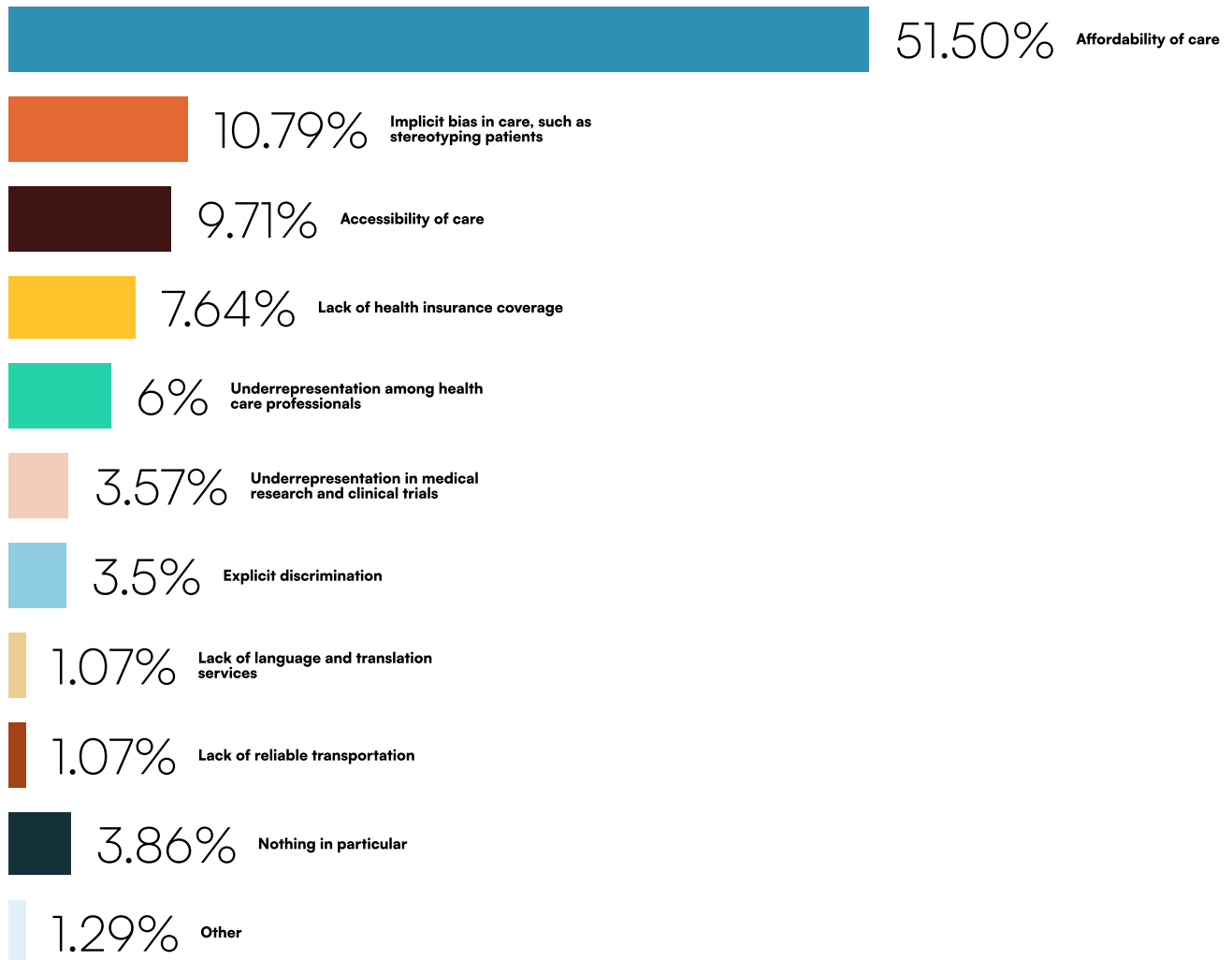


What do you think are the most effective ways to achieve health equity in our health care system?

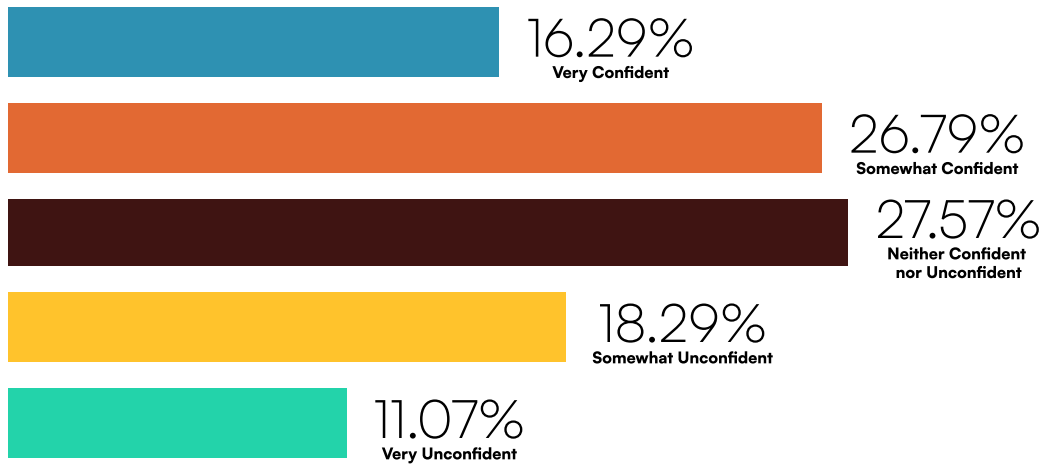
(Select up to 3)



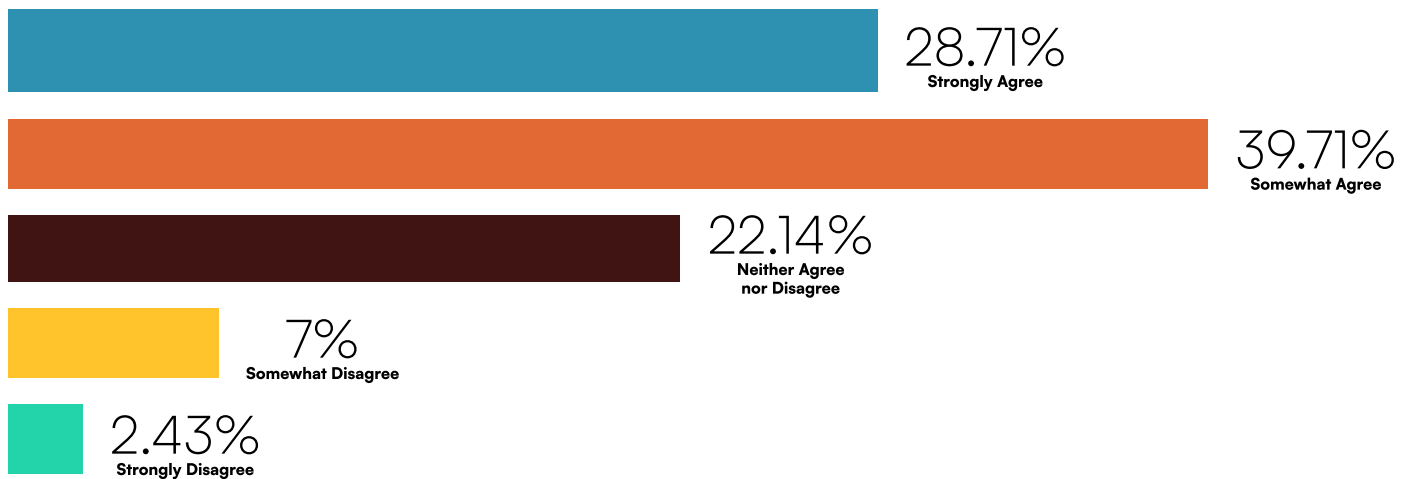
What, if anything, is the greatest barrier to achieving health equity in our society? Select the best match.



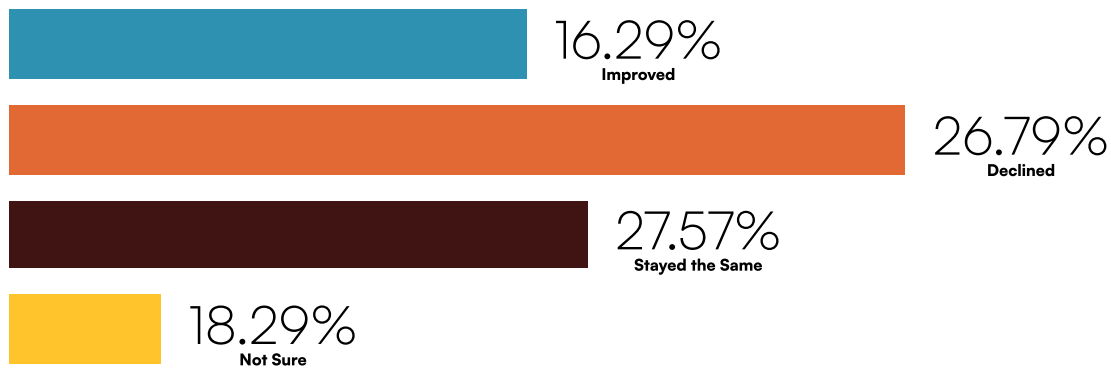
How confident or unconfident are you in the ability of the current health care system to address health equity effectively?



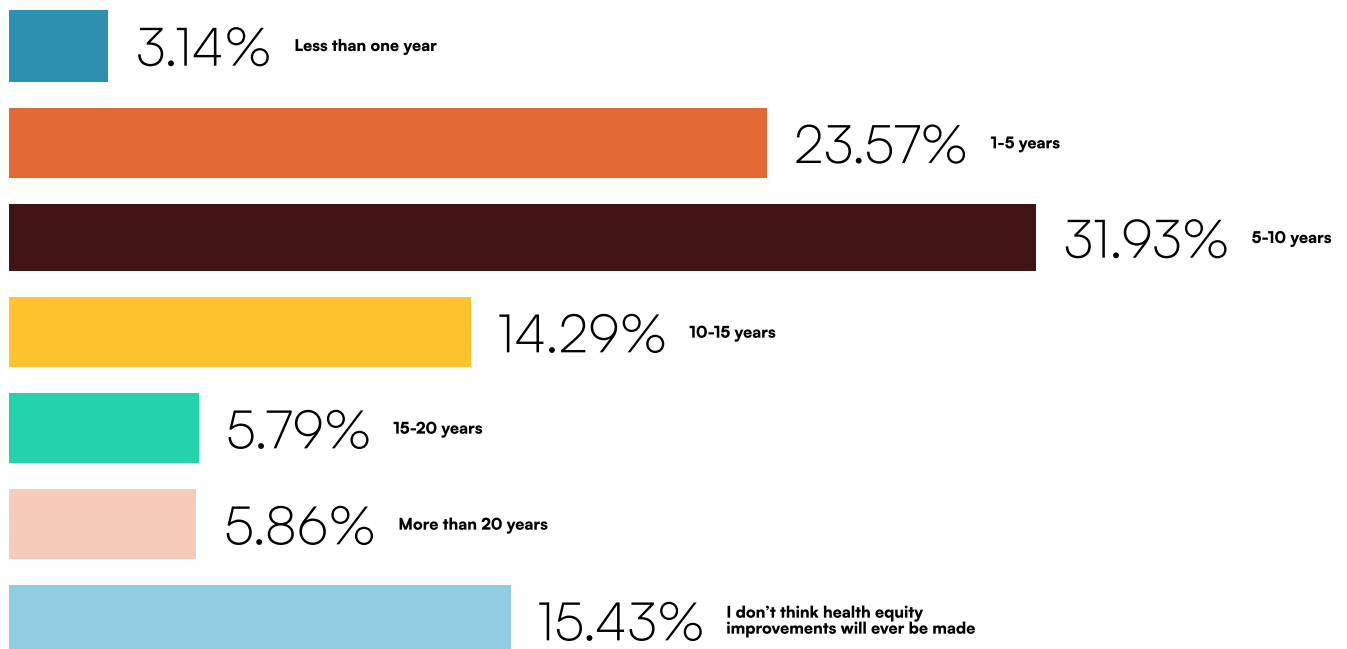
To what extent do you agree or disagree with the following statement, *“My company or organization is capable of effectively addressing health equity.”*



Over the past 5 years, do you think health equity has overall improved or declined in the U.S.?



How long do you think it will take to achieve noticeable improvements in health equity across the country?



RISE TO HEALTH COALITION

The Rise to Health Coalition is a national health equity initiative co-led by the **Institute for Healthcare Improvement (IHI)**, the **American Medical Association (AMA)**, and other industry collaborators, including **PolicyLink**, that are on a mission to improve patient health outcomes—making health care better for all.

The Coalition consists of members from across the health care system, including health care organizations and professionals, payers, pharmaceutical, research, and biotech organizations, and professional societies that are committed to taking specific actions on issues related to health care access, social and structural drivers of health, workforce diversity, and quality and safety of care. The **Rise to Health Coalition** receives funding support from **Genentech**, a member of the **Roche Group**; the **Commonwealth Fund**; the **Institute for Healthcare Improvement (IHI)**, and the **American Medical Association (AMA)**.

Join the Coalition and learn more at www.RiseToHealthEquity.org.